

CERTIFICATE OF LOCATION OF GOVERNMENT CORNER

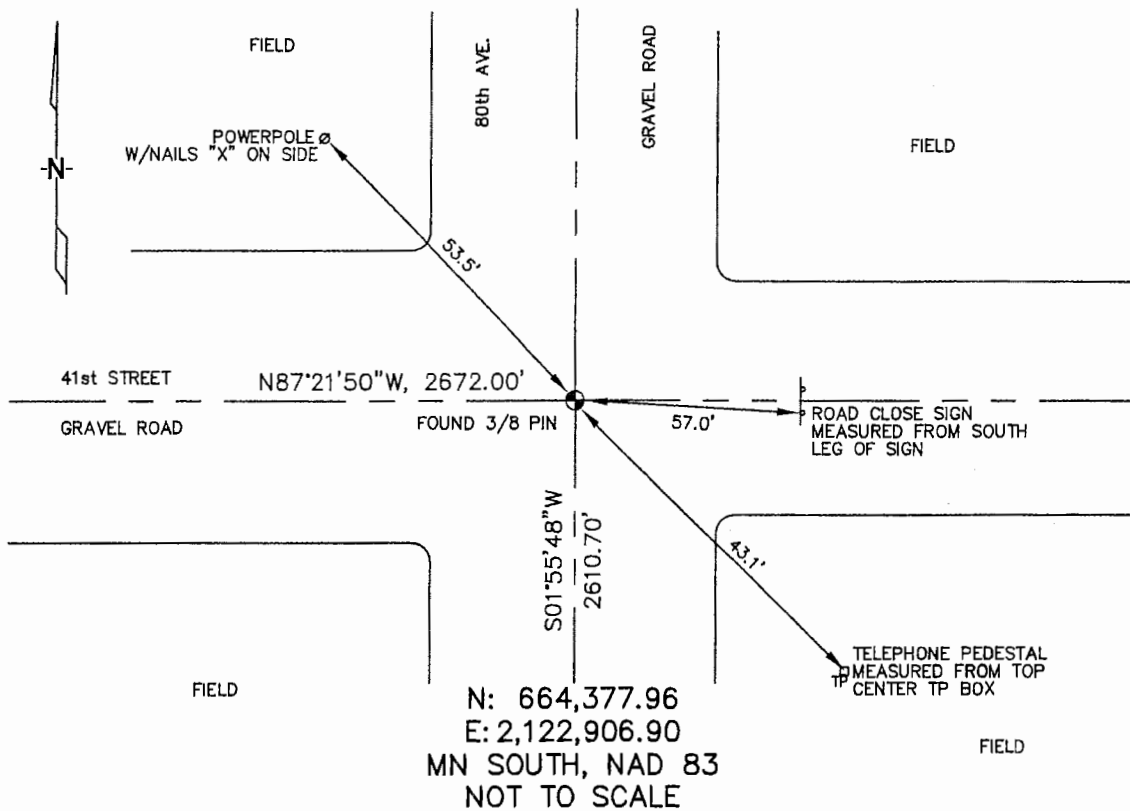
NORTHEAST Corner of Section 17, Township 105, Range 42, 5TH P.M.

STATE OF MINNESOTA, County of MURRAY

At the corner location shown on the sketch :

- On 3/15/2006 found 3/8" IRON PIN @ INTERSECTION
OF GRAVEL ROADS.
- left monument as found, lowered monument, removed monument (explain)
- On _____ set _____

Sketch of reference ties



Statement of evidence relative to this corner location is on back page

I hereby certify that this document and the data contained herein was prepared by me or under my direct supervision.

Thomas V. Zeff 6/29/06
 Thomas V. Zeff Date
 Registration No. 44563

- Land Surveyor, Professional Engineer
- County Surveyor, County Engineer

OFFICE OF THE COUNTY RECORDER

County of _____

SEP 28 2006

I hereby certify that this document was filed in the Co. Recorders office at _____ .M. on the day of _____ A.D. , 20

County Recorder James V. Johnson
 By _____, Deputy

DOCUMENT NO. _____

STATEMENT OF EVIDENCE:

NORTHEAST CORNER, SECTION 17, T. 105 N., R. 42 W.,
MURRAY COUNTY, MINNESOTA

- 1861 D.W. WELLMAN & S.S. SMOOT, U.S. DEPUTY SURVEYORS,
MONUMENTED CORNER.
- 5/12/1979 MURRAY CO. HIGHWAY DEPT., FOUND FIELD STONE; PLACED IRON
SPIKE ABOVE STONE.
TIES: SE-43.13' TO NAIL & CAP ON TELEPHONE PEDESTAL;
NE-45.34' TO NAIL & CAP ON POWER POLE BRACE.
- 3/15/2006 ULTEIG ENGINEERS, INC., SURVEY CREW, BRIAN PAYNE PARTY CHIEF,
FOUND 3/8" IRON PIN AT INTERSECTION OF GRAVEL ROADS.
TIES: NW-53.5' TO NAILED 'X' ON SIDE OF POWER POLE;
SE-43.1' TO TOP, CENTER OF TELEPHONE PEDESTAL;
E-57.0' TO SOUTH POLE OF "ROAD CLOSED" SIGN;
S-2610.70' TO EAST 1/4 CORNER, SECTION 17;
W-2672.00' TO NORTH 1/4 CORNER, SECTION 17.